

On-Sight

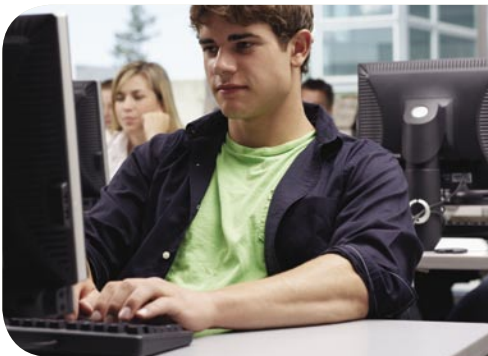
Computer Monitoring Software

- Monitor student computer activity in an entire school or district
- Help educators identify at-risk students for intervention
- Observe any computer on the network in real time
- Log web activity for a computer or a student
- Monitor unsupervised computer workstations
- Schedule unattended recording of computers or students
- Share student activity reports with teachers and parents
- Meet CIPA requirements for monitoring online activities



Identify

Obtain detailed information on student computer activity to detect early warning signs of harmful student behavior. Observe unattended or remote computers to identify potential problems. Monitor specific computers or students across a WAN to track patterns of misuse.



Ensure

Be confident student online activity conforms to acceptable standards with district-wide monitoring capability. Provide tangible evidence to support needed intervention. Promote positive behavior and enforce responsible use of school resources.



Intervene

Stop at-risk behavior and assist teachers in documenting inappropriate student computer activity. Take automatic screen shots and record applications or web sites. Generate reports to share with teachers and parents.

FEATURES



Always Ready

Safeguarding students is more challenging than ever before. Schools face new concerns: cyber-bullying, inappropriate web use, gaming, social networking, hacking, destructive and at-risk behavior.

Be Ready

“Effective supervision and monitoring is important for deterrence, detection, investigation and responding to incidents of cyberbullying”

NANCY WILLARD M.S J.D.
CENTER FOR SAFE &
RESPONSIBLE USE OF
THE INTERNET

- 1 Student Computers** Monitor any computer in your school network with ease. Just install the On-Sight software. An MSI-compatible installation process makes it easy to deploy to hundreds, or even thousands of computers. On-Sight works with mobile computers too; any computer connected to the network can be monitored.

 - See every computer in your school, or throughout your district
 - Works in the classroom, computer lab, library and on mobile clients
 - Supports Windows 98/XP/2000/Vista
 - Minimal footprint, easily deployed to thousands of computers
 - Secure from student attempts at tampering
- 2 Supervisor Console** Supervisor access can be customized to match individual needs and responsibilities. For example, the principal and vice principal may be able to see every computer in the school, while IT staff only sees those in the computer labs. Multiple supervisors can monitor overlapping sets of computers simultaneously.

 - Supervise a virtually unlimited number of computers
 - Select custom groups of computers or students to monitor
 - Initiate full-screen supervision in real time of any individual computer
 - Snap screenshots stamped with time, date, computer and login information
 - Communicate with students through chat when their activities need correction
- 3 Auto-Supervisor** On-Sight's Auto-Supervisor function makes it possible for any administrator to monitor student computer activity continuously, without spending the day tied to a computer. Choose any group of computers or students you are concerned about and automatically capture screen shots and computer activity.

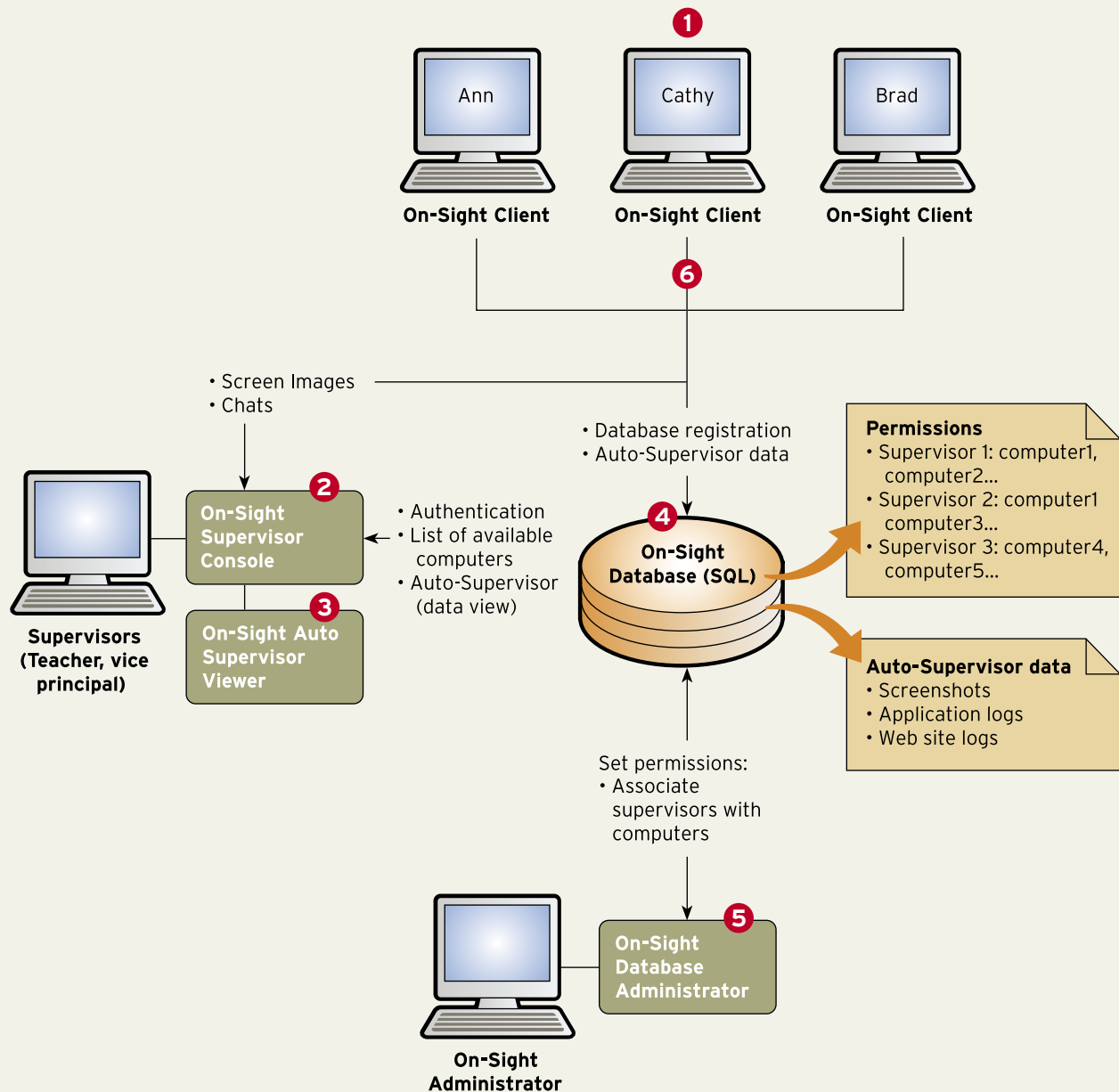
 - Keep track of student activity even when no administrator is watching
 - Select high-risk computers or students for closer monitoring
 - Log web sites and application activity by computer and by student
 - Capture screenshots automatically, at intervals you select
 - Locate the data you need using an easily searchable database
 - Create custom reports to share with students, teachers and parents
- 4 Database** On-Sight uses a central database to store data on a secure server that can be available 24/7. The robust database support eliminates the possibility of a student hijacking the system and uses powerful built-in search tools to help you easily locate the data you are looking for.

 - Microsoft SQL2005 Express provided, full Microsoft SQL supported
 - Securely collects and maintains data in a central repository
 - Identifies legitimate supervisors by Windows login
 - Active Directory integrated - works with your current logins
 - Robust security prevents student hijacking of the system
 - Automatic maintenance keeps size of database within user defined limits
- 5 Database Administrator** The On-Sight Database Administrator provides overall control of access to On-Sight within your school system. Assign rights for use of the On-Sight supervision functions, and determine which group of computers and students specific supervisors are able to monitor. Built-in tools make it easy to manage storage space.

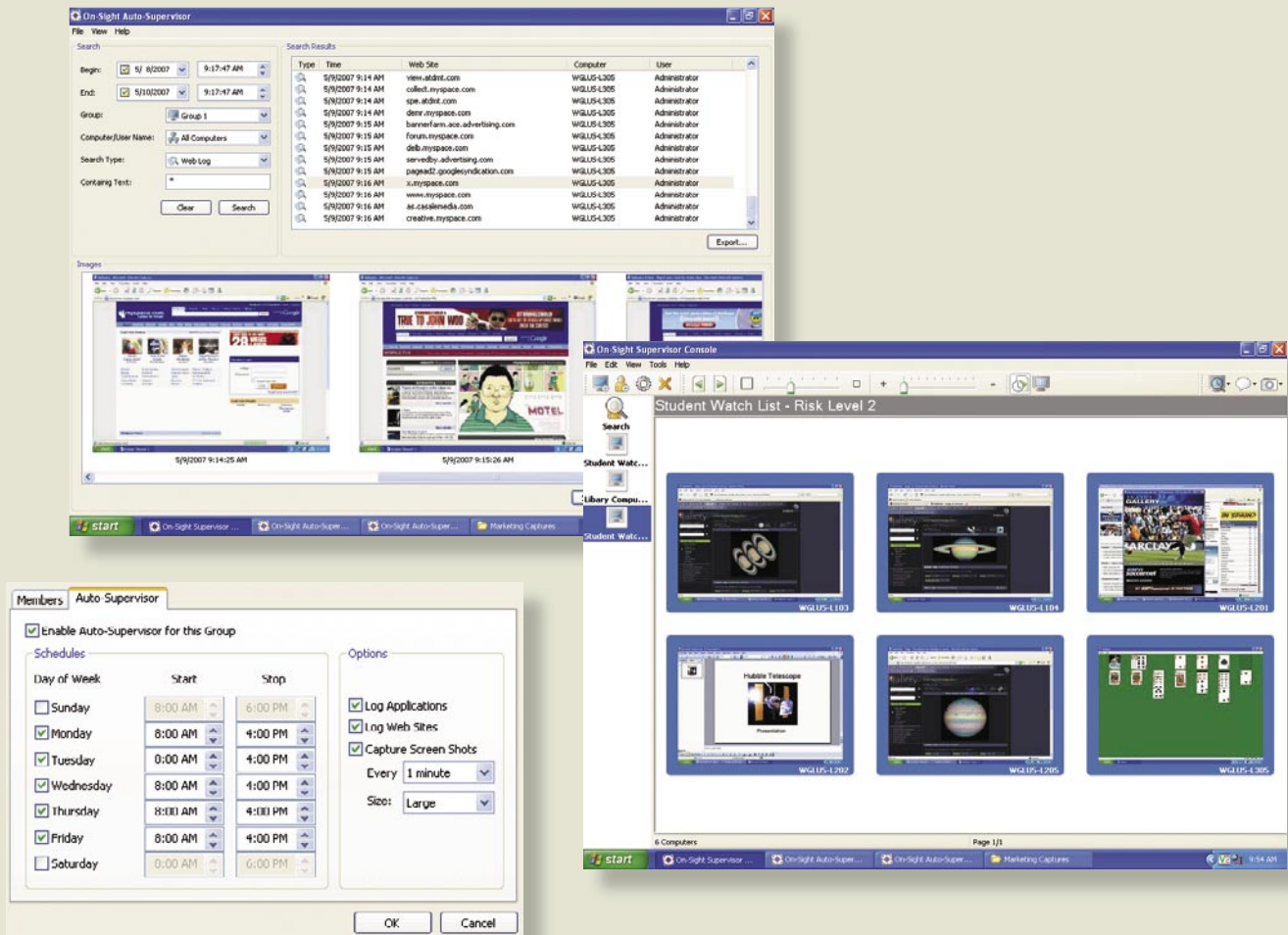
 - Assign supervision rights and control access to monitoring capabilities
 - Ensure individuals see only the students/computers they are responsible for
 - Manage database parameters, set limits for database storage
 - Monitor database usage and determine when older data will be replaced
- 6 Network** On-Sight works seamlessly with Windows and Novell networks. Active Directory support makes it easy to auto-synch with your directory. On-Sight is designed to have limited impact on your network bandwidth. The software uses optimized image compression combined with smart data sharing to eliminate redundancies.

 - Active Directory integration for Microsoft Windows networks
 - Independent SQL authentication for workgroups
 - Compatible with other network configurations, including Novell
 - Minimal impact upon network traffic, even when monitoring large installations
 - Clients automatically reconnect for monitoring when attached to the network

How On-Sight Works On A School Network



On-Sight System Requirements **Computers:** Operating System (Supervisor Computer): Windows 2000, XP or Vista, Operating System (Student Computers): Windows 98, SE, 2000, XP or Vista, Processor: Intel Pentium III processor or equivalent; 500 MHz or higher, Memory: 64 MB RAM; 128 MB or higher, Hard Disk: 30 MB of available hard disk space, Video Display: Any 100% VGA compatible graphics adaptor. **Network:** Wired network: 10 Mbps full duplex; 100 Mbps or higher recommended, Wireless network: 802.11 b/g. **Database Server:** Windows 2000 (SP4) or 2003 (SP1) Server, Windows 2000 (SP4), XP (SP2) or Vista, 1 GHz Pentium III Class CPU or greater, 512 MB RAM or more, 350 MB hard disk space (more required for data storage).



Supervision The simple and intuitive interface of the On-Sight Supervisor Console makes it easy for school administrators to monitor student online activity and computer use. Administrators can access the supervisor console from any computer in the network. Supervise any chosen combination of students or computers.

Assign Privileges Administer supervision rights to individuals based on their responsibilities and needs. Principals, vice principals, IT staff and other educators responsible for supervising and safeguarding students can be assigned the right to monitor groups of computers across the network.

Auto-Supervisor Just select the groups of computers or students that you want to monitor, the data you want to record, and how frequently you want to capture screen shots. On-Sight gathers the information you need automatically, in a database that is easily searchable with powerful built-in search tools.



GenevaLogic

ACTIVE TEACHING SYSTEMS

UNITED STATES

15725 SW Greystone Court, Suite 105
Beaverton, OR 97006
866.725.7833 | Fax 503.352.3413

SWITZERLAND

Chasseralstrasse 1-9
CH-4900 Langenthal
+41 (0)62 957 70 40 | Fax +41 (0)62 957 70 50

Authorized reseller/partner



www.genevalogic.com